

NTA (National Testing Agency) conducted the JEE (Joint Entrance Examination) Main from 6th January 2020 to 9th January 2020. The examination took place in two shifts. First shift from 9:30 AM to 12:30 PM and Second shift from 2:30 PM to 5:30 PM.

According to our top most JEE faculty, the exam was moderate and most of the questions were based on NCERT text books.

Paper Format

The JEE Main exam 2020 was conducted in online mode (Computer Based Test-CBT) and paper pattern was different from last year. This year, each subject comprised of 25 questions out of which 20 were MCQs and 5 were numerical type. The question paper of JEE Main 2020 comprised of 60 multiple choice questions 20 each in Physics, Chemistry and Mathematics, each carrying a reward of 4 marks for the correct answer and deduction of 1 mark for every incorrect answer, and 15 numerical questions 5 each in Physics, Chemistry and Mathematics each carrying a reward of 4 marks for the correct answer and NO DEDUCTION for incorrect answer.

Overall Difficulty Analysis

In JEE MAIN exam, candidates found questions from Mathematics more difficult as compared to the other two subjects –Physics and Chemistry. Questions were from various topics covering the syllabus of class 11 and 12. The tables below shows the distribution of questions from class 11 and 12 and their segregation based on level of difficulty, for all three subjects.

Analysis for Physics-

Topic	Class	Easy	Medium	Difficult	Total
General & Experimental	11th	5	2	-	7
Mechanics	11th	15	17	4	36
Waves	11th	3	3	-	6
Fluid	11th	2	2	1	5
Thermal Physics	11th	7	9	1	17
Electricity & Magnetism	12th	25	18	3	46
Optics	12th	9	5	-	14
Modern Physics	12th	6	6	-	12
Electronics	12th	5	2	-	7
Total					150

Analysis for Chemistry –

Topic	Class	Easy	Medium	Difficult	Total
Physical Chemistry	11th	9	19	4	32
	12th	5	13	5	23
Inorganic chemistry	11th	4	11	4	19
	12th	5	14	8	27
Organic Chemistry	11th	6	10	4	20
	12th	4	14	6	24
Miscellaneous	11th	-	3	2	5
	12th	-	-	-	0
Total					150

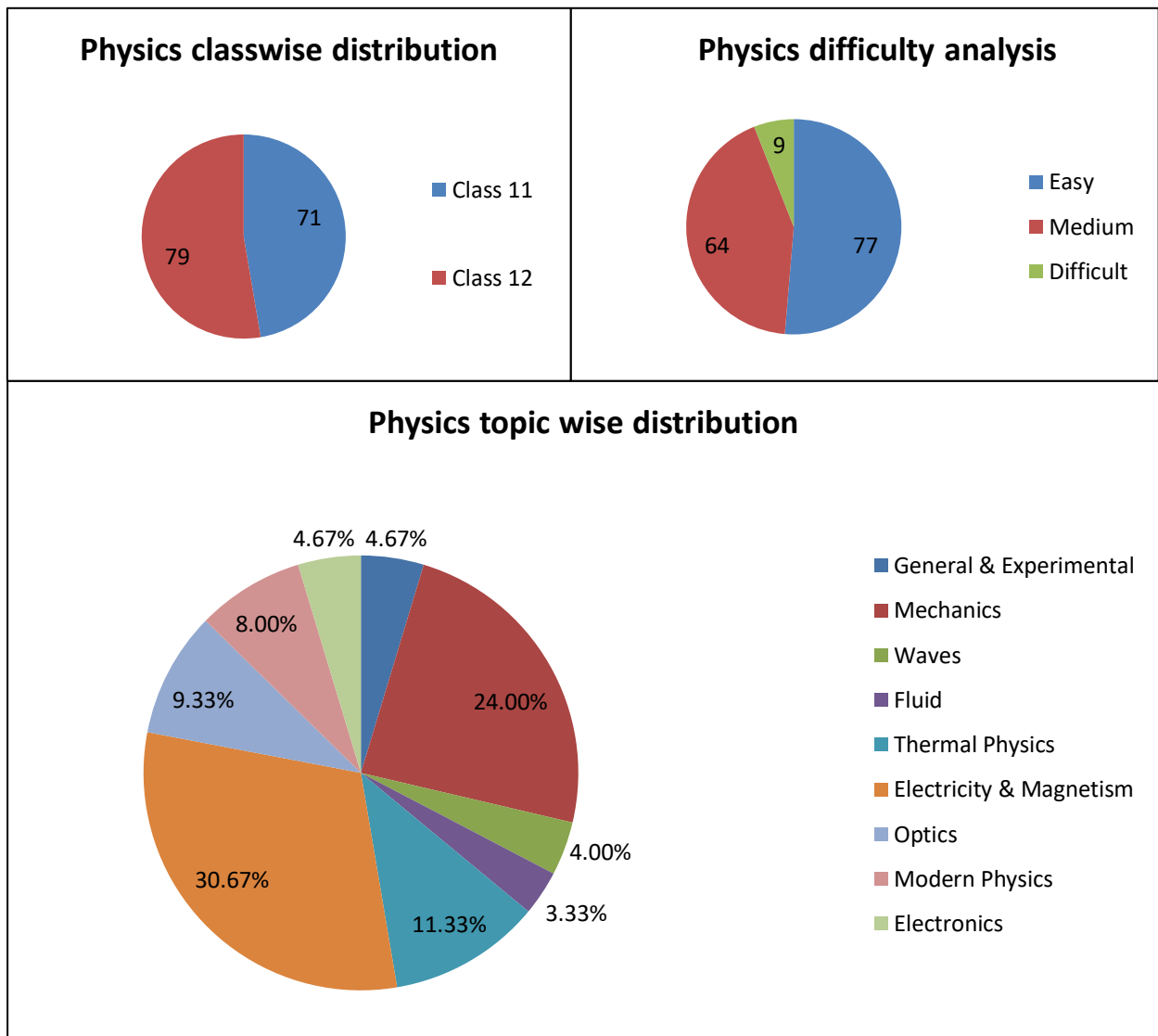
Analysis for Mathematics –

Topic	Class	Easy	Medium	Difficult	Total
Algebra	11 th	15	12	2	29
	12 th	8	13	4	25
Coordinate Geometry	11 th	4	4	-	8
	12 th	9	4	2	15
Differential Calculus	12 th	9	17	2	28
Integral Calculus	12 th	7	8	4	19
Trigonometry	11 th	1	3	-	4
	12 th	-	1	-	1
Vector	12 th	2	6	-	8
Miscellaneous	11 th	6	4	1	11
	12 th	1	1	-	2
Total					150

Subject wise analysis

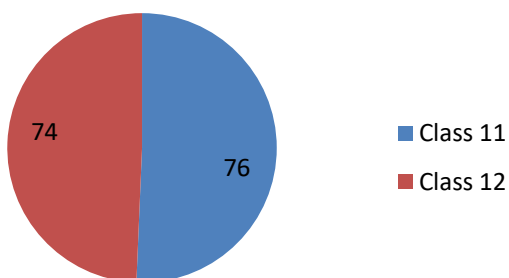
We present in the following pages a break up of questions for each of the subjects across topics, classes and difficulty.

Physics

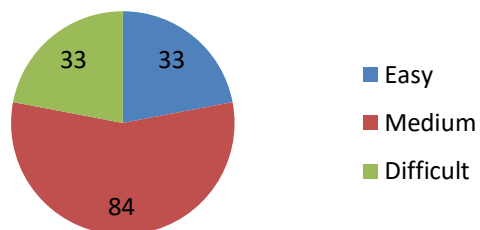


Chemistry

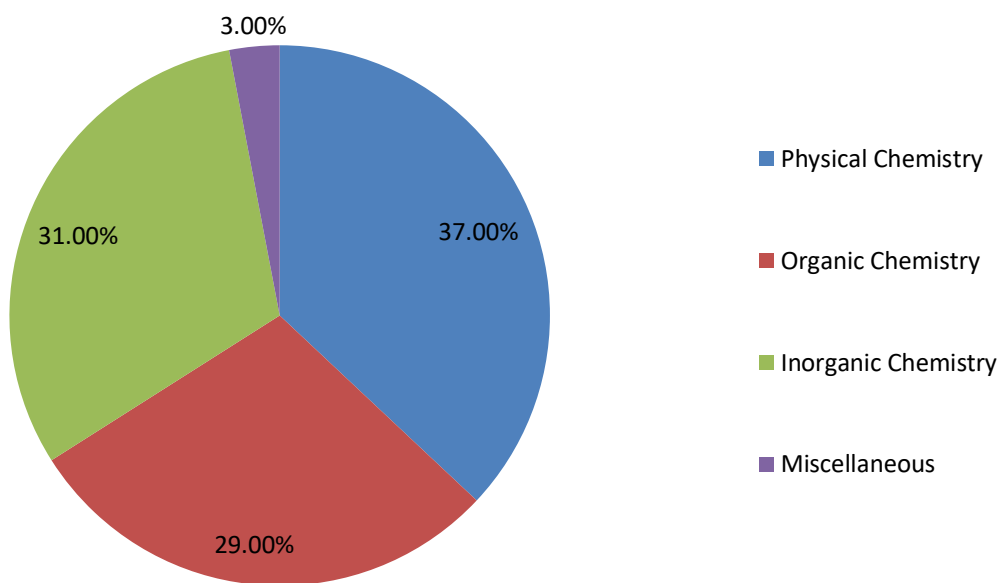
Chemistry Class wise distribution



Chemistry Difficulty wise analysis

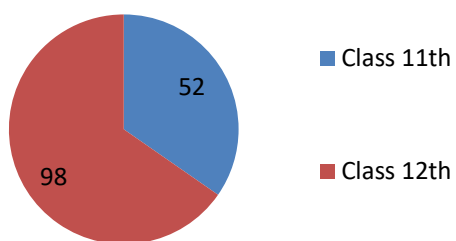


Chemistry topic wise distribution

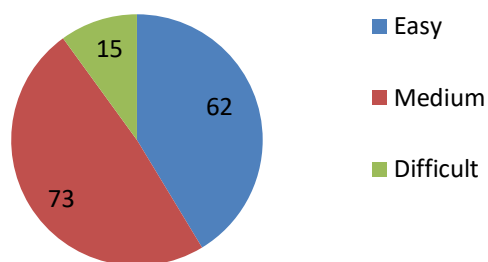


Mathematics

Mathematics Class wise distribution



Mathematics Difficulty wise analysis



Mathematics topic wise distribution

